

HOW TO INSTALL SPLITTER

April 2025

moxi

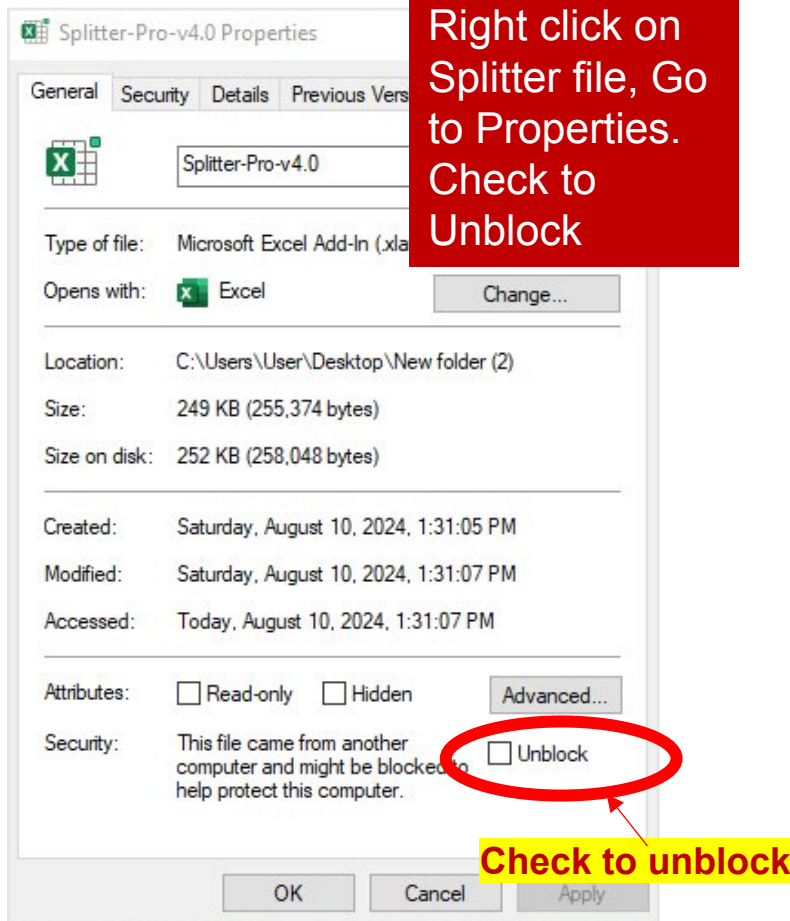
1. Create Directory to Save Splitter in your PC/Laptop.
Download Splitter.

Download here
www.maxiresearch.com

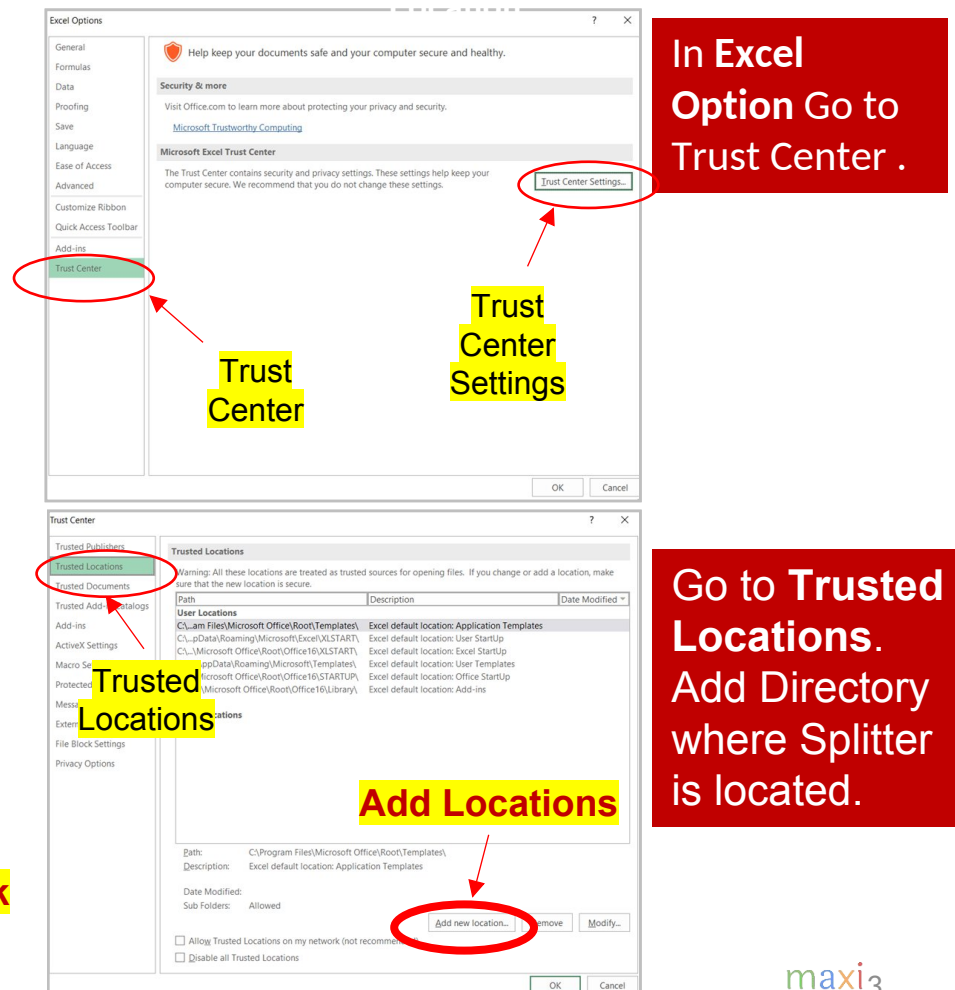
2. Enable Macro for Splitter.

- Splitter is an Excel Add-In /Excel **macro** program.
- A couple of options to make sure macro for Splitter is enabled therefore would not be blocked

Option 1: Unblock in File



Option 2 : Add Splitter Directory to Trusted



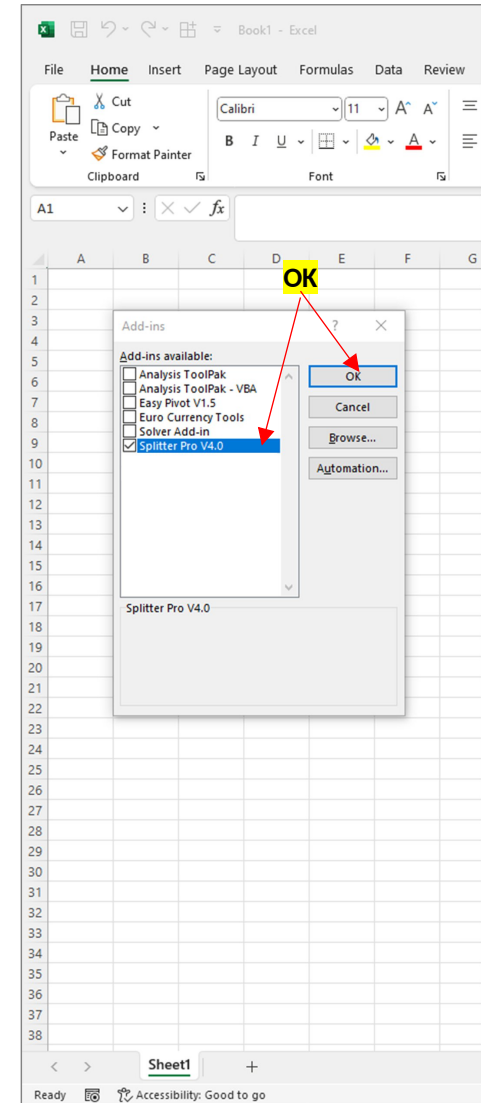
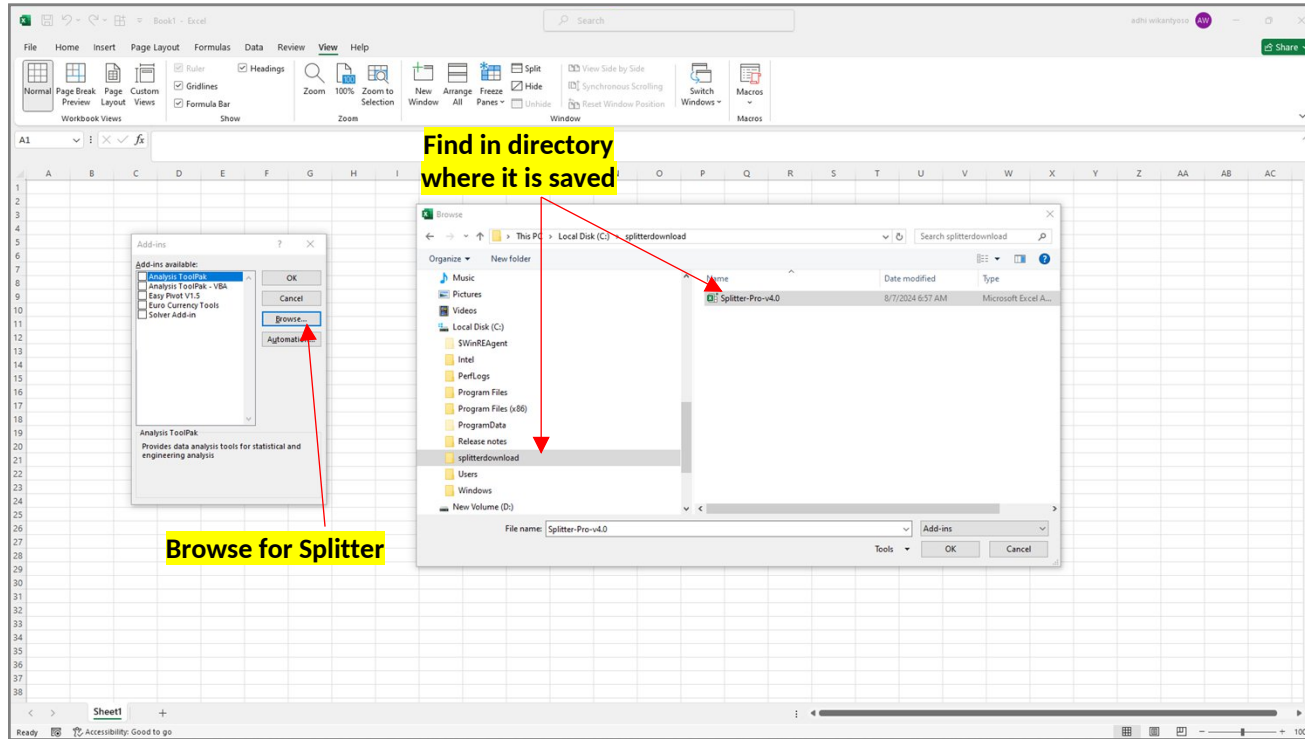
3. Browse for Splitter (1)

The screenshot shows the Microsoft Excel interface with the 'Excel Options' dialog box open. The 'Add-ins' tab is selected in the left sidebar. The 'Analysis ToolPak' add-in is listed under 'Inactive Application Add-ins'. Red circles and arrows highlight the 'Excel Options' button, the 'Add-ins' tab, and the 'Go...' button. Yellow text boxes label these elements: 'Excel Option', 'Excel Add Ins', and 'Manage Excel Add Ins, Go...'.

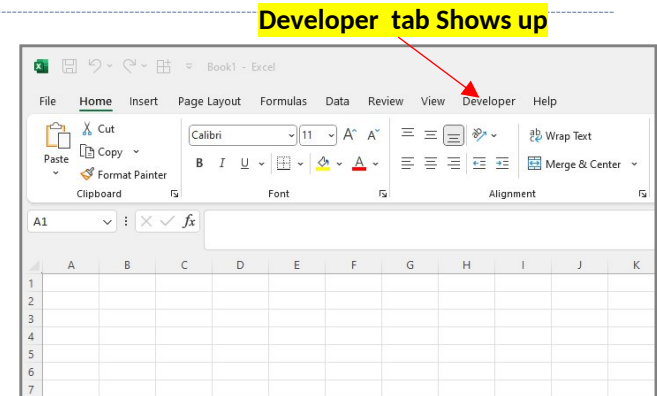
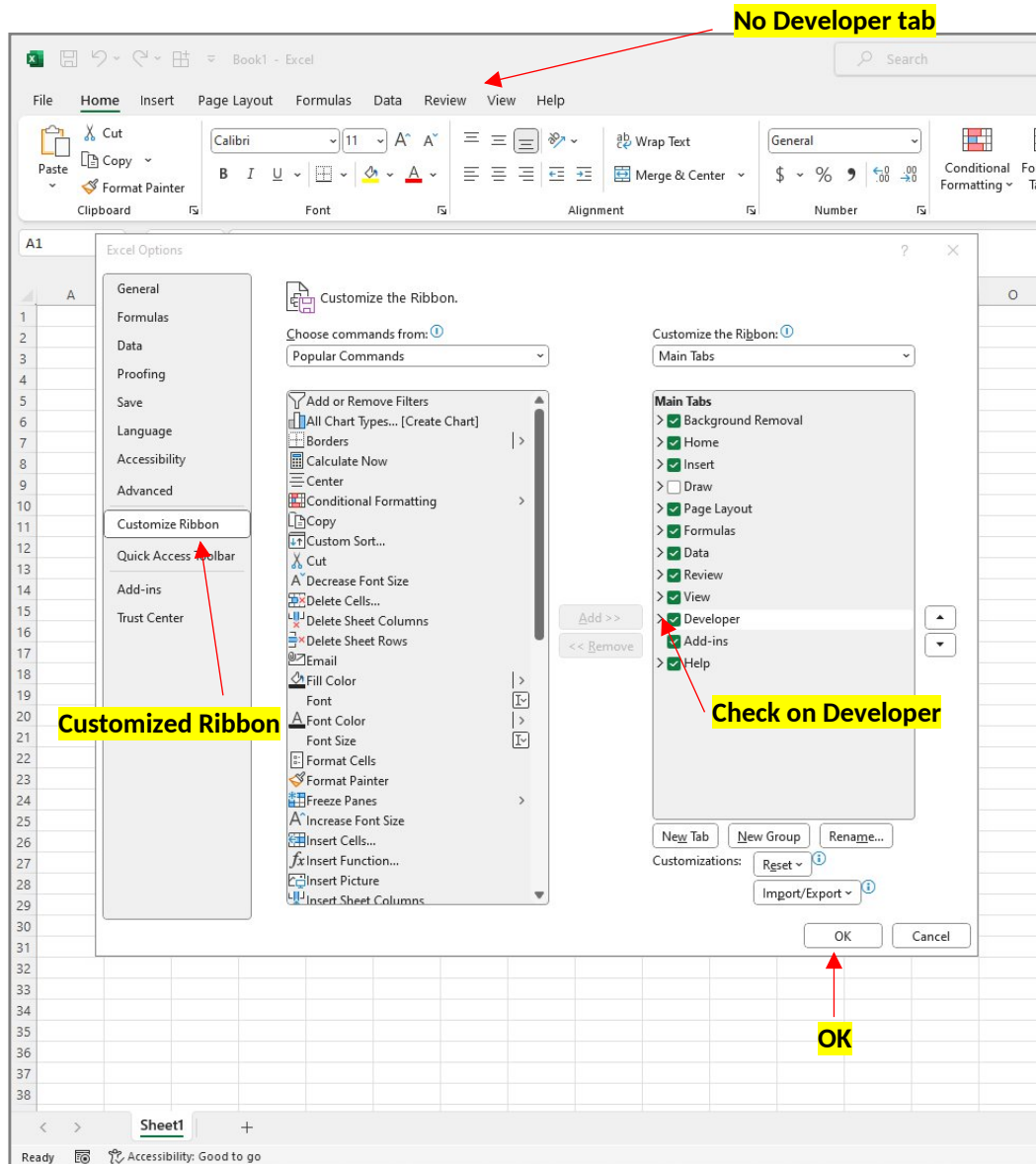
Name	Location	Type
Active Application Add-ins		
No Active Application Add-ins		
Inactive Application Add-ins		
Analysis ToolPak	C:\Program Files\Microsoft Office\root\Offi	Excel Add-in
Analysis ToolPak - VBA	C:\Program Files\Microsoft Office\root\Offi	Excel Add-in
Date (XML)	C:\Program Files\Common Files\Microsoft	Action
Easy Pivot V1.5	C:\Users\User\AppData\Roaming\Microsoft	Excel Add-in
Euro Currency Tools	C:\Program Files\Microsoft Office\root\Offi	Excel Add-in
Inquire	C:\Program Files (x86)\Microsoft Office\Offi	COM Add-in
Microsoft Actions Pane 3		XML Expansion Pack
Microsoft Data Streamer for Excel	C:\Program Files\Microsoft Office\root\Offi	COM Add-in
Microsoft Power Map for Excel	C:\Program Files\Microsoft Office\root\Offi	COM Add-in
Microsoft Power Pivot for Excel	C:\Program Files\Microsoft Office\root\Offi	COM Add-in

Manage: Excel Add-ins Go...

3. Browse for Splitter (2)



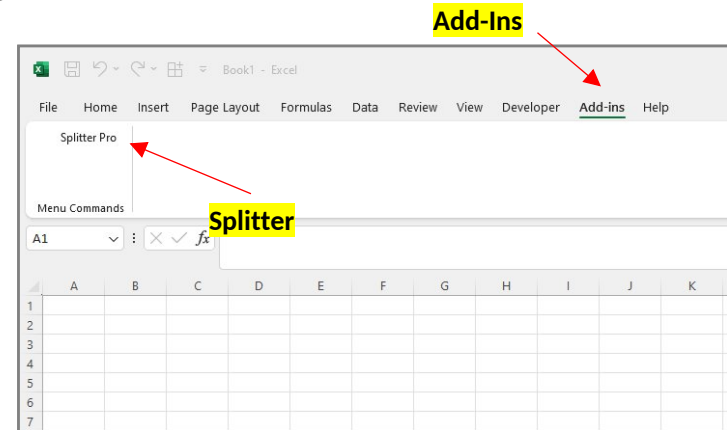
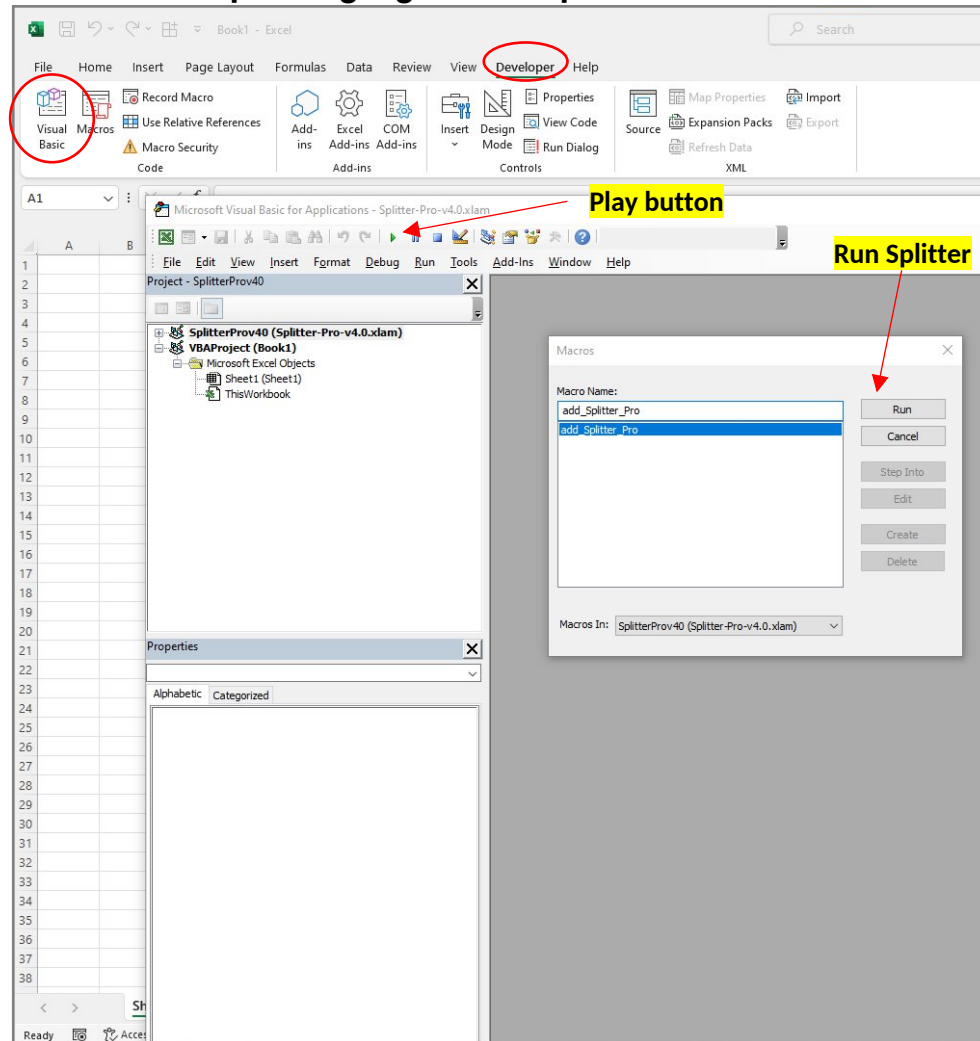
4. Turn On Developer Tab



5. Run Splitter to Complete Installation

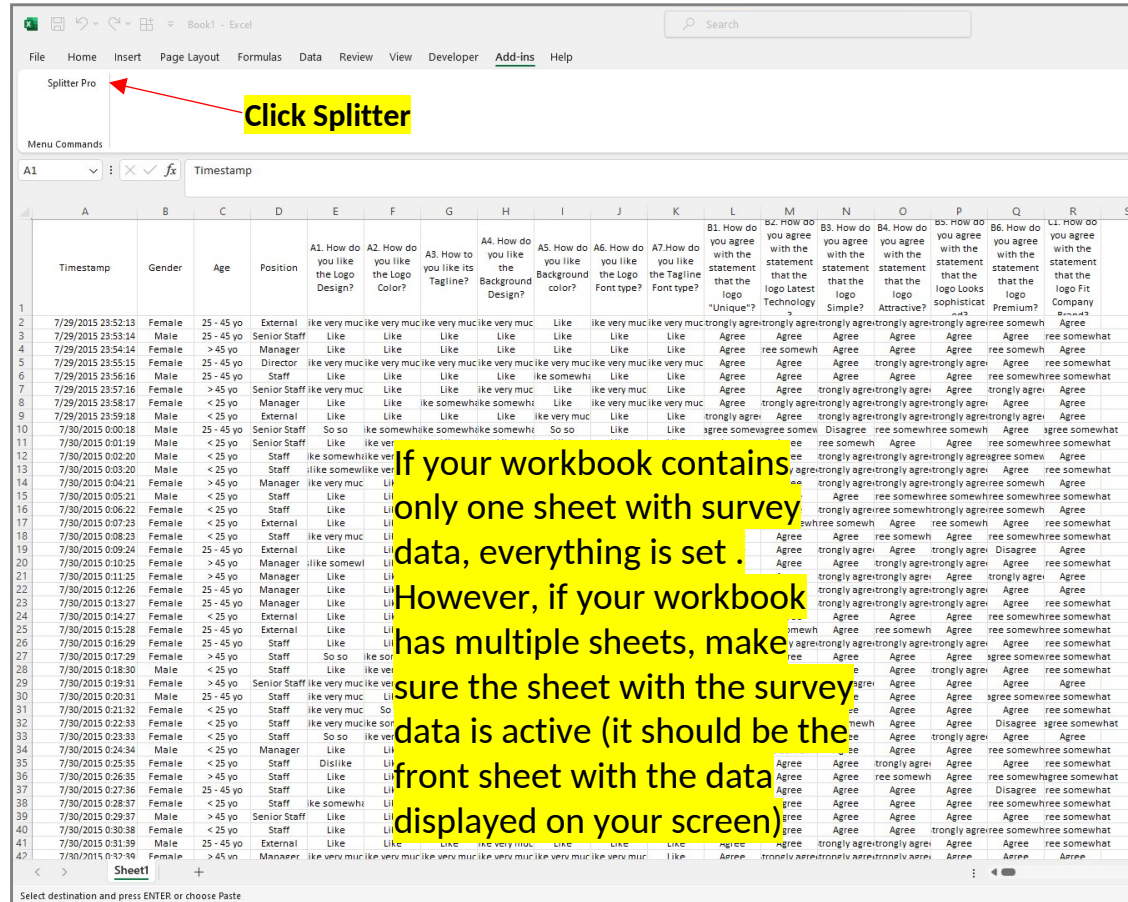
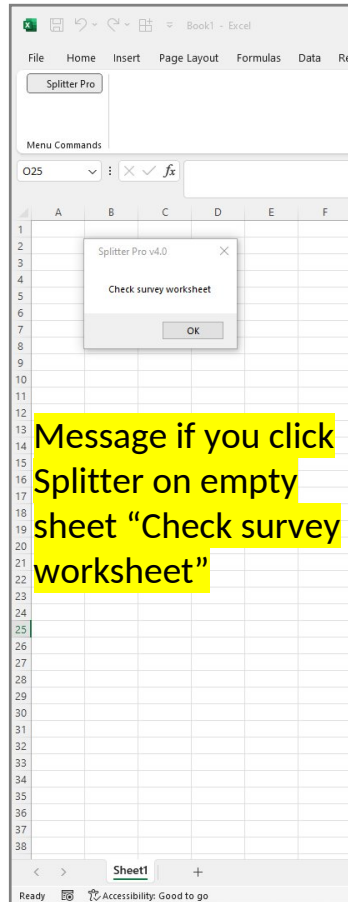
On the Developer tab, click Visual Basic.

A Visual Basic window will appear. In the Project Explorer, highlight Splitter and click the Play button. A new window will open. Highlight "Add Splitter" and click Run

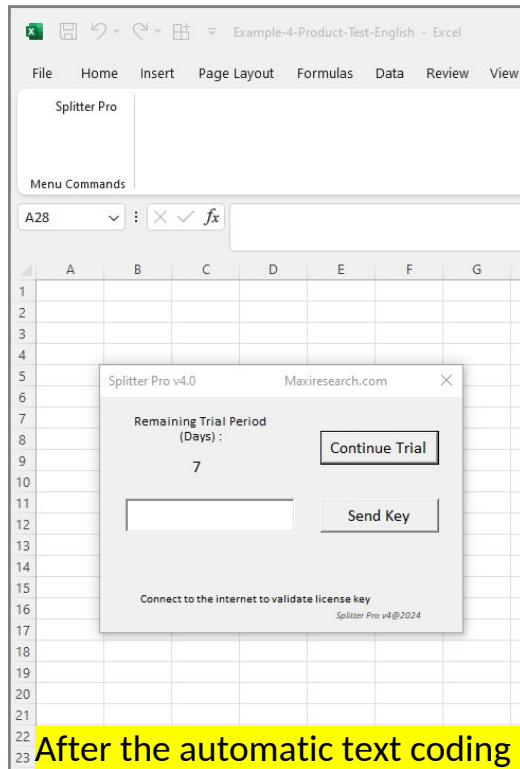


A new tab appears: Add-Ins, with the Splitter button inside it. This completes the installation.

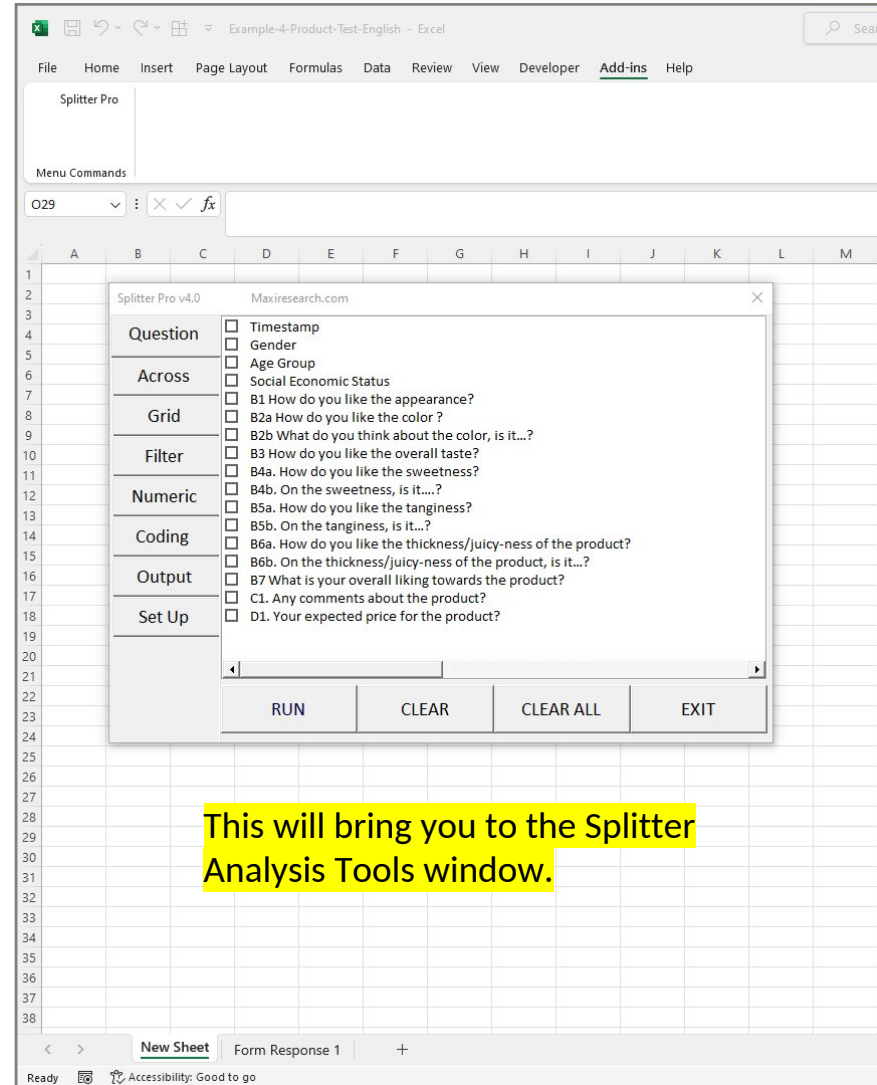
6. With Splitter Installed, Run it on Survey Data



7. Continue With Trial Or Enter The Key



After the automatic text coding of the survey data, a window will pop up asking you to either continue with the trial or enter a key



This will bring you to the Splitter Analysis Tools window.

THANK YOU

MAXI Research
www.maxiresearch.com
Splitter@maxiresearch.com